

# Ashlands Primary School

*"Where every child has the chance to shine"*







A large green rectangular sign with white text and a green leaf logo on the right. Above the sign is a smaller circular logo with a red flower and the text 'Ashlands Primary School Walsley'. The sign is set against a background of lush green trees and a field of red and pink poppies in the foreground.

# Ashlands Primary School and Nursery

## The School Day

Our school day is 8.55am to 3.30pm.

Saplings, our before and after school club opens from  
7.30am – 8.55am and then 3.30pm– 5.30pm.

## Key Stage 1 and 2 playtimes:

**Morning** 10:30am until 10:45am

**Lunchtime** 12:00pm until 1:00pm

## Afternoon

Key Stage 1 – 2:30pm until 2:45pm

Key Stage 2 – 2:15pm until 2:30pm

## Reception and Nursery playtimes:

In our Early Years Unit the children have access to continuous outdoor provision as part of the curriculum and therefore there are no set playtimes.

## School Uniform

Our school jumper is emerald green with the red school logo and has been chosen for its practicality and comfort as well as to give the children a sense of 'Ashlands' pride and identity within the local community.

Nursery children wear red polo shirts and jumpers and black 'joggers or leggings'.

## Nursery

Children can join our nursery from the term after their third birthday when they are eligible for free early year's education provision, which is 15 statutory hours per week.

At Ashlands this is delivered in the form of 5 sessions of 3 hours—9.00am – 12.00pm or 12.30pm – 3.30pm.

Wrap-around care and lunch is available and we offer 30 hours places. For more details about the Nursery please speak to the School Office.



## Welcome to Ashlands Primary School—'Where every child has the chance to shine' Our Values and Ethos

Ashlands is a two form community primary school set in the heart of Ilkley.

All admissions, including in year admissions, are handled by the Bradford authority. Further information can be found on our school website [Ashlands Primary School - Admissions](#).

We focus our provision on the education of the whole child: academic, spiritual, emotional, cultural and physical.

Early Learning is a major focus at Ashlands. We have a Foundation Unit, comprising of Nursery and two Reception Classes.

In keeping with our aim to 'Serve at the Heart of the Community' we have developed 'wrap around care' to complement education provision in the Nursery and parents have the option of accessing full-time nursery facilities. The pre and post school club 'Saplings' caters for working parents from 7.30am until 5.30pm.

From September 2021 we are open for 50 weeks. Initially this was for Nursery and Reception children we aim to be open for children up to Year 6 by April 2022.

You can visit the Ashlands Assessment webpage by clicking [here](#) and click [here](#) to view the Gov. UK Ashlands Primary School performance data.



At Ashlands we aim for every child to strive to reach their potential in whatever area they flourish in and to feel safe and be nurtured to achieve their best.

- We provide every child with opportunities to develop knowledge, skills and understanding to make their way and contribute in our society.
- Children will leave Ashlands equipped to be curious, resilient and enquiring learners who celebrate each other's differences and have a responsible and caring attitude to everyone.
- Learning at Ashlands is dynamic, creative, engaging and broad providing every child with exposure to a range of work and keeping the child's experience at the heart of everything we do.
- The education of the whole child academic, spiritual, emotional, cultural and physical.
- We strive to help all our children to become members of a welcoming and cohesive community celebrating the rich diversity of the nation we live in.

### Ashlands Community

New families join Ashlands throughout the year. We make a special effort to ensure that they are welcome and that children settle quickly into their new environment. We pride ourselves on being an open school. We consult widely, we listen and we follow up. 'Friends' (our PTA) is at the heart of our school community. 'Friends' raises money, provides numerous social events and above all its members provide a warm welcome to new parents.



### School meals, snacks and milk

Meals are prepared on the premises using fresh local produce wherever possible. Our Catering Manager operates a Healthy Options menu that is published around school and sent out to parents. Both hot and cold options are available and we cater for children who are vegetarian or may require a special diet.

At Ashlands we operate a social dining system where children taking school dinners sit with those bringing packed lunches. By doing this they are secure in the knowledge that they always have a seat amongst their friends and they can enjoy their food in a relaxed and civilised way. All Key Stage 1 children are entitled to Universal free school Meals

Dinner money can be paid via Arbor or by cash or cheque.

A team of Lunchtime Supervisors look after the children in the dining room and in the playground.

### School milk

Milk is available for all pupils. It is free to Nursery and Reception children or if you qualify for free school meals. There is a small charge for all other children.

### Day Time Snacks



Children in Key Stage 1 are provided with a fruit or vegetable snack at morning break through the **National Fruit and Vegetable Scheme** and there is no charge.

Children in Key Stage 2 may bring in a healthy snack for example fruit/vegetable if they wish. Sweets, chocolate, biscuits or crisps are not allowed.

Children are encouraged to bring in bottled water and bottles can be filled at the fountains around school. Other drinks are not allowed.

### Lost Property

We ask that all items of clothing, including PE kits, are labelled with your child's name.

### Mobile Phones

Mobile phones brought into school should be handed into the school office for safe keeping during the school day. We would advise that only the older children in Year 5/6 may need to bring a mobile phone to school.



### Medicine in School

We are only able to administer prescribed medicine to pupils and ask parents to come to the school office to complete a Permission Form. If at all possible, we ask parents /carers come to school to administer medication or administer it at home.







Throughout the year, we arrange for visitors to come to school to explore with the children areas of interest and special subjects. Our pupils hear from speakers and storytellers on a wide range of topics; different religions and cultures, periods of history, environmental issues and as well as road, fire and e-safety. We encourage links with the local community and authors from the Ilkley Literature Festival run talks and workshops as well as other community groups who come into school to talk to the children. We are always keen to hear from parents and carers who have experience or specialist knowledge in topics we are covering and who would like to share this with the children.

Within the school year we plan Focus Weeks where the children deepen their understanding of specific areas of the curriculum.

### The Curriculum at Ashlands

The curriculum is divided into three stages:

Early Years Foundation Stage (nursery and reception)

Key Stage 1 (Years 1 - 2)

Key Stage 2 (Years 3—6)

#### Early Years Foundation Stage

We follow the Early Years Curriculum in the Foundation Stage, which is organised into the following prime areas of learning:

- Communication and Language
- Physical Development
- Personal, Social and Emotional Development

And into specific areas of learning which are:

- Literacy
- Mathematics

- Understanding of the World
- Expressive Art and Design

All of the above are underpinned by the characteristics of effective learning:

- Playing and Explaining
- Active Learning
- Creating and Thinking Critically

We use an online learning journey to record the children's development. Parents can log onto the system to view their child's progress and contribute.

#### Key Stages 1 and 2

All children are taught English, Mathematics and Science as core subjects.

There are also programmes of study for Art and Design, Computing, Design Technology, Geography, History, Music, Physical Education and Forest Schools.

Our Integrated Curriculum incorporates these subjects, where it is relevant and at other times they are taught as discrete subjects. In KS2 children learn French.

Visit our curriculum page [here](#)



### Teaching and Learning

At Ashlands we believe it is essential to have high expectations of all children and motivate them to persevere and produce work of high quality. Teachers provide children with a rich curriculum and a wide variety of experiences, which match their needs and interests. Our philosophy places great emphasis on all pupils acquiring the basic skills as well as an appreciation of the world around them and the value of relationships. We are committed to ensuring that each child will become skilled, confident, competent and a contributing member of the school and society as a whole. It is our aim to build on the talents, skills, strengths and interests of our children and celebrate these as a community.

Our curriculum is designed to be rich and stimulating, we strive to offer depth and challenge in all subject areas. It is our aim to promote the spiritual, moral, cultural, mental and physical development of all children in order to prepare them for opportunities, responsibilities and experiences in their future lives.



## Special Needs

Ashlands has an inclusive approach to educating children with Special Needs and welcomes all children into the school community. We take special pride in the facilities we offer to pupils with Special Needs. Class teachers differentiate work according to children's abilities and ensure that what they plan meets the needs and interests of all children. The Special Needs Coordinator works closely with the staff to ensure planned provision. Full details of our SEN offer can be found here [Ashlands Primary School - SEN and Local Offer](#)

## Equal Opportunities

The policy of this school is to be totally inclusive and to make all children and their parents welcome. Children have varied educational needs whether they are boys or girls, members of ethnic minorities, children who have learning difficulties and/or mental or physical disabilities or because of personal, family or social circumstances. Therefore within the curriculum and the after school activities provided at Ashlands we promote equal opportunities for all our children.

## Personal and Social Development

Sex and Relationships Education (RSE) is taught through the PSHE curriculum at Key Stage 1 and 2. Where necessary we draw on specialist help from our school nurse who comes into the school regularly, or from Community Health Visitors who are also able to provide us with resources.

SRE is approached through units of work, 'Growth' in Year One, 'Healthy Bodies' in Year 3 and specialist outside agencies deliver a puberty talks and workshop to children in Upper Key Stage 2. These policies have been developed by staff, in consultation with governors and parents.

In addition we seek to answer children's questions honestly as they arise. The depth of an answer given will of course depend on the age and maturity of the child asking the question. At all times we stress the need for stable and loving relationships in connection with any teaching relating to sex education.

## School Visits and Residential Trips

School visits take place throughout the year, linking with topics studied in the classroom. A voluntary contribution towards the cost of these visits is normally requested. All visits / trips are covered by personal and all risk insurance. We also offer a residential trip, at a cost, for the Year 6 pupils.

## Religious Education and Collective Worship

At Ashlands, Religious Education is taught in accordance with the Bradford

Agreed Syllabus for Religious Education. Although the school is non-denominational we are keen to provide an introduction to the traditions and celebrations of faiths and cultures which enrich our wider community.

Parents have the right to request that their children are withdrawn from religious lessons and assemblies on the grounds of conscience. You are asked to write to the Headteacher to request exemption. Where this is the case the child will be suitably supervised elsewhere in school.

## Cycling Skills

Children in Year 5 have the opportunity of improving their biking skills through a Cycling Proficiency Programme which is run in the summer term.

## Swimming

Children in Year 3 and 4 have swimming lessons at Ilkley Pool on a Friday morning as part of the National Curriculum. These are rotated through the classes with each class attending for a term.





## Eco Developments at Ashlands

### Ashlands Community Garden

The building of our community garden is well underway and is designed to:

- Be enjoyed and used by Ashlands Primary children and our local community
- To benefit local wildlife and encourage biodiversity through the creation of a range of supportive habitats
- To support a strong curriculum with regular access for all our children to outdoor learning opportunities
- To help children to connect with nature and develop a love and appreciation for their natural surroundings.

### Bees

We have taken ownership of our first bee hives in March with the bees arriving in June! We are very excited about producing our very own Ashlands honey and raising money for school funds!

### Wildflower Garden

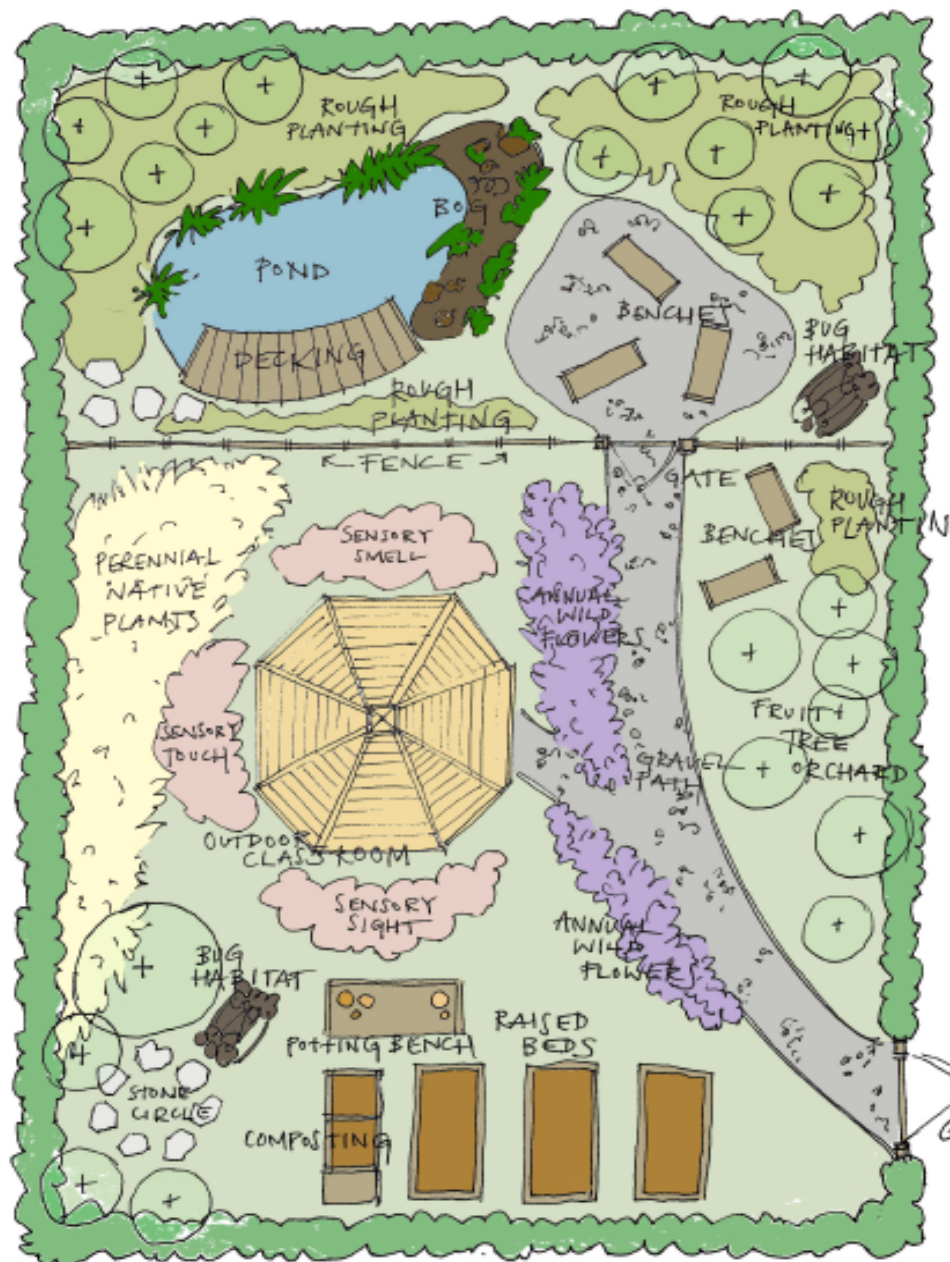
This year will be the third year of planting a wildflower garden at the front of school. Our first year coincided with the arrival of Covid in our lives and we were inundated with wonderful feedback from the local community around how it had brightened up their daily walks and the positive effect it had on their mental health.

### Eco Schools

We are working towards Eco-Schools Green Flag Accreditation .

We want our pupils to be aware of the challenges our planet faces, and will continue to face throughout their lifetimes. Our hope is by doing this we will empower our pupils with the passion and skills to protect our planet now and throughout their lifetimes, including as they grow to become leaders, decision-makers and educators themselves.

We started to work towards our Bronze award in January 2022 and have formed a Eco-schools committee containing representatives from Reception to Year 6. They have named themselves "Ashlands' Protectors of the Planet".





### Extra Curricular Activities

We have a wide range of before and after school and lunchtime clubs. These vary according to the interests of the children and time of year and include French, a variety of sports clubs, music clubs and dance.

We have an a running club that is organised by parents and the children are able to take part in the Wharfedale Primary Cross Country League representing the school.

Ashlands is part of the Ilkley Primary Schools Sports League and Key Stage 2 children are able to take part in after school sports events representing school throughout the year.

Music tuition is provided by the Bradford Music and Arts Service and is available across a wide range of instruments within the school day.

The Ashlands Orchestra (Razzamatazz) is open to anyone in Key Stage 2 who would like to play an instrument. This takes place on a Friday morning before school. In Key Stage 2 children are also able to join the school choir who practise at lunchtime.

### The Governing Body

Ashlands has an active and committed group of Governors who meet regularly to discuss school development and policies. Sub-committees exist, namely Finance, Buildings and Pastoral and Academic.

You can view details of the current Ashlands Governing Body



### Parental Communication and Involvement

We welcome parents' active involvement in their child's education and ensure we maintain a close partnership between home and school.

Our Curriculum Newsletters, which are half termly, Celebration Assemblies and 'Share and Celebrate' sessions keep parents informed during the course of the school year.

We hold Parents' Evenings twice a year, normally in October and March. Where parents need to speak to a member of staff outside of these times they should speak to the class teacher or contact the school office for an appointment. We also provide a written report about your child at the end of the academic year.

We welcome parents who are able to help in the classroom during school hours with activities such as reading. If you are able to help please contact the school office. All volunteers are required to complete a DBS (Disclosure and Barring Service).

### The Friends of Ashlands Association

The school has an active PTA known as 'The Friends of Ashlands'.

Friends organise fund raising activities and social events such as the Christmas and Summer Fairs, Bun Bakes, Second Hand Uniform Sales and Film Nights.

We pride ourselves at being very much part of the local community. Our Bonfire Night is a hugely popular event not only with Ashlands families but with also with the wider Ilkley community and Friends also organise the Ashlands entry for the Ilkley Carnival.

If you would like to join the Friends committee please contact the school office who will put you in touch with them.



## Visits to School

We recognise that families move house throughout the year and warmly welcome prospective parents and children to visit our school.

Although arrangements have been different during Covid, we normally hold Open Mornings in November for families who are selecting a primary school for their child who is due to start school in the September of the following year.

If you would like to arrange a visit please contact the school office.

## Why choose Ashlands?

Here's what the children have to say....

'We all get along, we're safe and everyone is welcome'

'I like all the Focus Weeks, we have like Arts Week, Book Week, Enterprise Week and Science Week. They are interesting and we learn new skills whilst having fun'

'I like that we do lots of different sports through the year, my favourite is cricket'

'Problems are not ignored, they are dealt with by the teachers and they always listen to both sides of the story'

'I love all the different plays and performances that we do throughout our time at school like nativities, May Pole Dancing and the Summer Performance and of course the highlight, the Year 6 Show!

'My favourite subject is music and I love that we have our own school orchestra, Razzmatazz'

'I love that the pupils have a voice and our opinion matters. We get the chance to be a rep, for the school newspaper, a dinner rep, an eco rep or a class rep. We also have the responsibility of showing parents round school at Open Days which I really enjoyed doing'

'It's great that we have lots of different assemblies like singing and house point assembly and that different people come in to talk to us, like authors, artists, parents who have different, interesting jobs, firemen and even bee keepers!'

'We are lucky to have a school field that we get to play on in the summer. I also think our classrooms are nice and big and we have a lovely view out of the windows of the moor!'

'Rotas at playtime for things like football and the trim trail make it fair for everyone'

'It's fair, children get awards not just for being the best at something but also for things like most improved'

'The Robinwood Residential Trip we did at the beginning of Year 6 is the best thing I have ever done in my life!!!!'

'The dinners are fab, we have our own chef and my favourites are the shepherd's pie and spaghetti and meatballs'.





Ashlands Primary School  
Leeds Road  
Ilkley  
LS29 8JY  
West Yorkshire

**Tel:** 01943 609050  
**Email:** [office@ashlands.school](mailto:office@ashlands.school)  
**Website:** [www.ashlandsprimary.org.uk](http://www.ashlandsprimary.org.uk)  
**Head teacher:** Andrew Soutar  
**Chair of Governors:** Paul Smith



Vision Friendly  
Schools

