



Reception - Summer 1

Our topic this half term is, 'The Great Outdoors'. We are looking at the natural world around us and how things change and grow over time.

Literacy

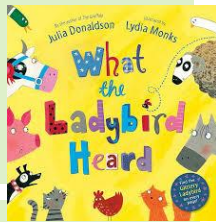
Children read simple phrases and sentences made up of known letters.



They re-read words and phrases to build confidence, fluency and understanding.

Children begin to write short phrases using the sounds they know.

They practise the correct letter formation for lower case and capital letters.



Maths

Children consolidate their counting skills using a range of strategies and larger sets of numbers.

They sort odd and even numbers according to their 'shape'.

Children recall number bonds to 10 and combine 2 groups when finding a total.

They can sequence events using words such as, first, then...



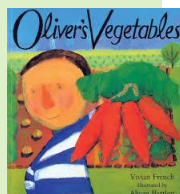
Understanding the World

Children will explore the natural world around us.

They understand the need to respect and care for the natural world and living things.

Children find out about planting and encouraging minibeasts to our school grounds. We look at life cycles of plants and animals.

If you are a keen gardener and would like to help us with planting, please let me know!



Personal, Social and Emotional Development

Children understand that there are changes in nature and humans.

They name the different stages in childhood and growing up.

Children use the correct vocabulary when naming the different parts of the body.

They know how to keep themselves safe.



Communication and Language

Children will share what they have seen in our school grounds and ideas of how to care for our environment.



They will talk about ideas for growing plants and attracting minibeasts to our local area.

Children will share a range of non-fiction books and online information to deepen their knowledge and vocabulary.

Physical Development

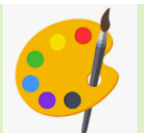
Children take part in energetic activities safely whilst negotiating different spaces.

Children use a comfortable grip with good control to form letters correctly.

They use a range of equipment safely to make models and props for their play.

Expressive Arts and Design

Children use instruments to explore loud and quiet sounds.



They will explore, use and refine a variety of artistic effects to express their ideas. Children will share ideas, resources and skills with each other.



Characteristics of Effective Teaching and Learning

Can Do Bee

Thinking Bee

Team Bee





What you can do to support your child this half term:

- Enjoy a local area walk and look for signs of 'new life'.
- Plant flowers to attract minibeasts to your garden or local area.
- Make a simple 'bug hotel' to encourage minibeasts.
- Visit Ilkley Library to find non-fiction books about growing and minibeasts.
- Listen to your child read their school reading book and make a note in their reading record book. We would like children to read their book **at least 3 times** to practise and consolidate their learning.
- Practise forming letters using the letter rhymes.
- Look for capital letters in the environment, signs, road names, posters etc.
- Write simple messages- lists, birthday cards, treasure hunt clues, add labels to toys or for a pretend shop. Children are keen to write for a purpose.
- Play traditional games such as Dominoes, Snap, Snakes and Ladders.
This encourages your child to recognise the pattern of spots on the dice instead of counting the dots (subitising).

•Please ensure ALL your child's clothing is clearly labelled with their name, **especially** jumpers/cardigans. This gives them a chance to find their own belongings.

•As the weather warms up (hopefully!) you may want to send in a sun hat and apply suncream before school.

•If you have any questions please do not hesitate to ask us in person, phone or email kate.hemming@ashlands.mlt.co.uk

Thank you for your continued support,
Miss Hemming