



# Reception Summer 2

This is our final half term in Reception! A chance to celebrate all our developments and achievements this year! Thank you for all your on-going support! Our topic is 'Out and About' [kate.hemming@ashlands.mlt.co.uk](mailto:kate.hemming@ashlands.mlt.co.uk)



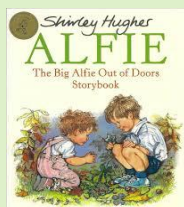
## Literacy

The focus this half term will be on independent writing - can the children apply their phonics skills and knowledge of different texts to write with limited adult support.

The aim is for the children to write extended sentences using common exception words (red words) ,

capital letters and full stops. Daily handwriting sessions continue.

Can they reread what is written to check it makes sense?



## Communication and Language

We will ensure the children have the opportunity to talk about changes and transition as we prepare them for the move to Year One. We will talk about all the things we enjoyed in Reception, and how we take our skills forward next year. Our knowledge of the past, present and future will inform our discussions and help us notice similarities and differences.



## Understanding of the World

By enjoying our school grounds, we will explore the natural world, make observations and contrast environments. We will investigate some important processes and changes in the natural world around us.



## Characteristics of Effective Teaching and Learning

- Can Do Bee
- Thinking Bee
- Team Bee



## Maths

**Number:** Have a deep understanding of number to 10, including the composition of each number; Subitise (recognise quantities without counting) up to 5; Automatically recall (without reference to rhymes, counting or other aids) number bonds up to 5 (including subtraction facts) and some number bonds to 10, including double facts.

**Numerical Patterns:** Verbally count beyond 20, recognising the pattern of the counting system; Compare quantities up to 10 in different contexts, recognising when one quantity is greater than, less than or the same as the other quantity; Explore patterns within numbers up to 10, including evens and odds, double facts and how quantities can be distributed equally.

## Personal, Social and Emotional Development

Continuing to show resilience and perseverance when facing challenges.

Express my feelings and consider the feelings of others.

### Transition to Year 1

Share worries or concerns about moving to Year 1.

Prepare for the move and become familiar with some routines and changes such as playtimes and lunchtimes.

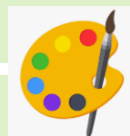


## Physical Development

Children will organise and match items, images, colour and symbols. Children will work with a partner to listen, share ideas and question. Children will begin to work together and as part of a team.

### Gross & Fine Motor:

- Show more accuracy and care when drawing
- Daily handwriting



## Expressive Arts and Design

We will continue to explore and experiment with a variety of materials, tools and techniques, experimenting with colour, design and texture. We will give children the opportunity to talk about their creations and explain the processes. A lot of our artwork will be generated from the great outdoors.



## Dates to remember:

### 26th June

Outdoor Fun on the Field 2.45pm

Join us for an afternoon of games and fun . All welcome! We will take part in some obstacle-style races and enjoy being together as we come to the end of the year.

### 3rd July

Farm trip - Thornton Hall Country Park

### 17th July

Sweet Summer Send-off 2.45pm

Join us for Miss Smith's legendary singing session and ice creams to say goodbye and good luck to everyone moving up and moving on.

**If you have any questions please do not hesitate to ask me in person, phone or email [kate.hemming@ashlands.mlt.co.uk](mailto:kate.hemming@ashlands.mlt.co.uk)**

Thank you for your continued support,  
The EYFS team